

DIVISION 2 - SITEWORK

Section 02850 - Trash Compactor Embed Plan

Introduction

The placement of a trash compactor on any project is a decision to be made by the University. (Either Facilities Management or Residence Life).

Trash compactors are strategically located throughout campus based on need and it's ability to serve several buildings.

Part 1 - General

- The trash compactor and associated container are provided by the City of Tucson, Sanitation Division.
- A concrete slab with embed plates and electrical power is to be provided per the attached drawing for all trash compactor installations.

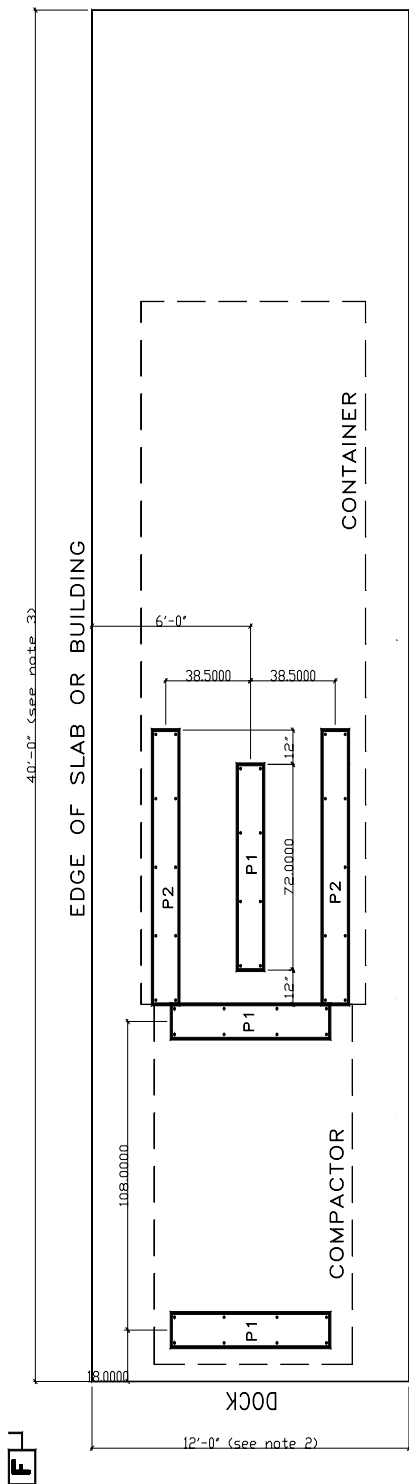
Part 2 - Products

- No discussion.

Part 3 - Execution

- No discussion.

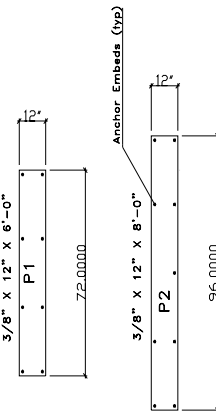
End of Section 02850



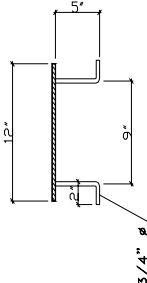
Notes

- 1) Trash compactor and container are provided by the City of Tucson, Sanitation Division.
- 2) Allowable 10'-0" and a length of 5'-0" greater than the combined length of the compactor and receiver container. If should be of minimum 3,000 lbs. The steel plate should be minimum 1/2" thick and should be welded to the embed plate to provide 2" clearance at all anchor bolts. It is preferred the concrete pad be flush with the surrounding ground level. If it must be raised above the surrounding ground level, the pad at the end opposite the compactor should be raised 2" above the surrounding ground level to provide adequate maneuvering room for the container handling vehicle. Allow a minimum of 45'-0" of clear space from the container-end of the pad for the container handling vehicle. The concrete pad should be positioned to allow 2'-0" clearance between the compactor and the container-end of the pad for the container handling vehicle. The standard 40 CY container is 45'-0" long. Verify details and container size with the available. Verify details and container size with the available.
- 3) Overall pad length is dependent on container size. The standard 40 CY container is 45'-0" long. Verify details and container size with the available. Verify details and container size with the available.
City of Tucson
Sanitation Division
791-4822
791-4822
- 4) A lockable fused disconnect switch must be installed and be within sight of the compactor's electrical panel box location, not to exceed 5'-0" from the compactor.
- 5) Disconnect Box must be wired for 3 phase, 230 volts at 60 amps or 480 volts at 30 amps.

Steel Plate Measurements



Steel Plate Section Typ.



UNIVERSITY OF ARIZONA	
MANUAL OF DESIGN SPECIFICATION STANDARDS	
STANDARD DETAIL:	TRASH COMPACTOR EMBED LAYOUT
DRAWN BY: R. DOMINGUEZ	DETAIL NO. 02850-D1
APPROVED BY:	REVISIONS:
ACAD: D:\DSS\02850-1	