

University of Arizona

Arizona Public Media New Facility

The Paul and Alice Baker Center for Public Media

Construction Project Update – March 2024



CURRENT SITE OVERVIEW



PROGRESS UPDATE



Dug foundation before rebar

Dug foundation with 2 rebar mats

Formed foundation with single rebar mat

The first concrete spread footings were placed in March. Spread footings are the foundations for each of the building's columns. The footings are at different elevations so some are excavated below grade and others are formed directly on top of the "bathtub" that we discussed in the February Project Update. Each footing gets 1 or 2 "mats" of rebar reinforcement to help strengthen the concrete. There are 60 spread footings for the building.

PROGRESS UPDATE



Foundation just before concrete

The anchor bolts are put into a template to keep them in the correct locations in relation to one another. This assembly is then anchored into the proper location at the correct elevation so that nothing moves during the concrete placement.

Anchor bolts

Template



Foundation after concrete placement

Each footing has (4) anchor bolts of varying lengths and sizes incorporated into the reinforcing for the columns to anchor to later. There is only an 1/8" of tolerance for the location and elevation of the bolts so they are checked multiple times before the concrete is placed and then again after the concrete has been placed to ensure that they are in the correct locations.

PROGRESS UPDATE



Overview of primary electrical service entering the building

Conduit for generators

Conduit for the transformer

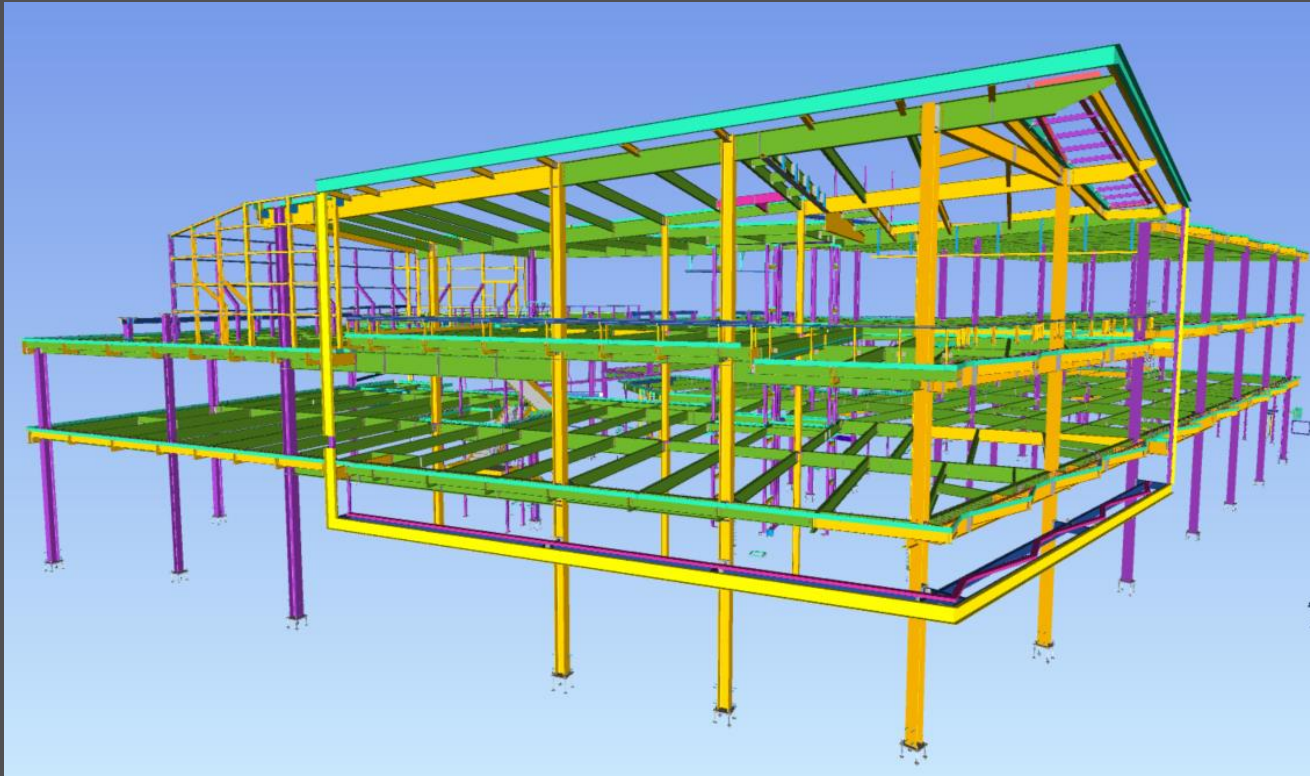
Multiple underground conduits (pathways for electrical wiring) are in progress to distribute power from the primary electrical service from the utility company to the transformer and from the transformer to the exterior generators and main power feeds into the building electrical rooms.

PROGRESS UPDATE



Offsite fabrication of structural steel beams and columns (see BIM image on next page)

LOOKING AHEAD



Erection of the steel structure shown in this Building Information Modeling (BIM) image will begin this month.

CRANE IS COMING SOON!

You can always keep up with what is happening on site by checking out the live construction feed on the UA PDC website. [Project Camera](#)